

**Robo** *MINI* 23HP



**ENERGREEN**<sup>®</sup> *America*  
Professional Machines 

REMOTE  
CONTROLLED  
TOOLS  
CARRIER

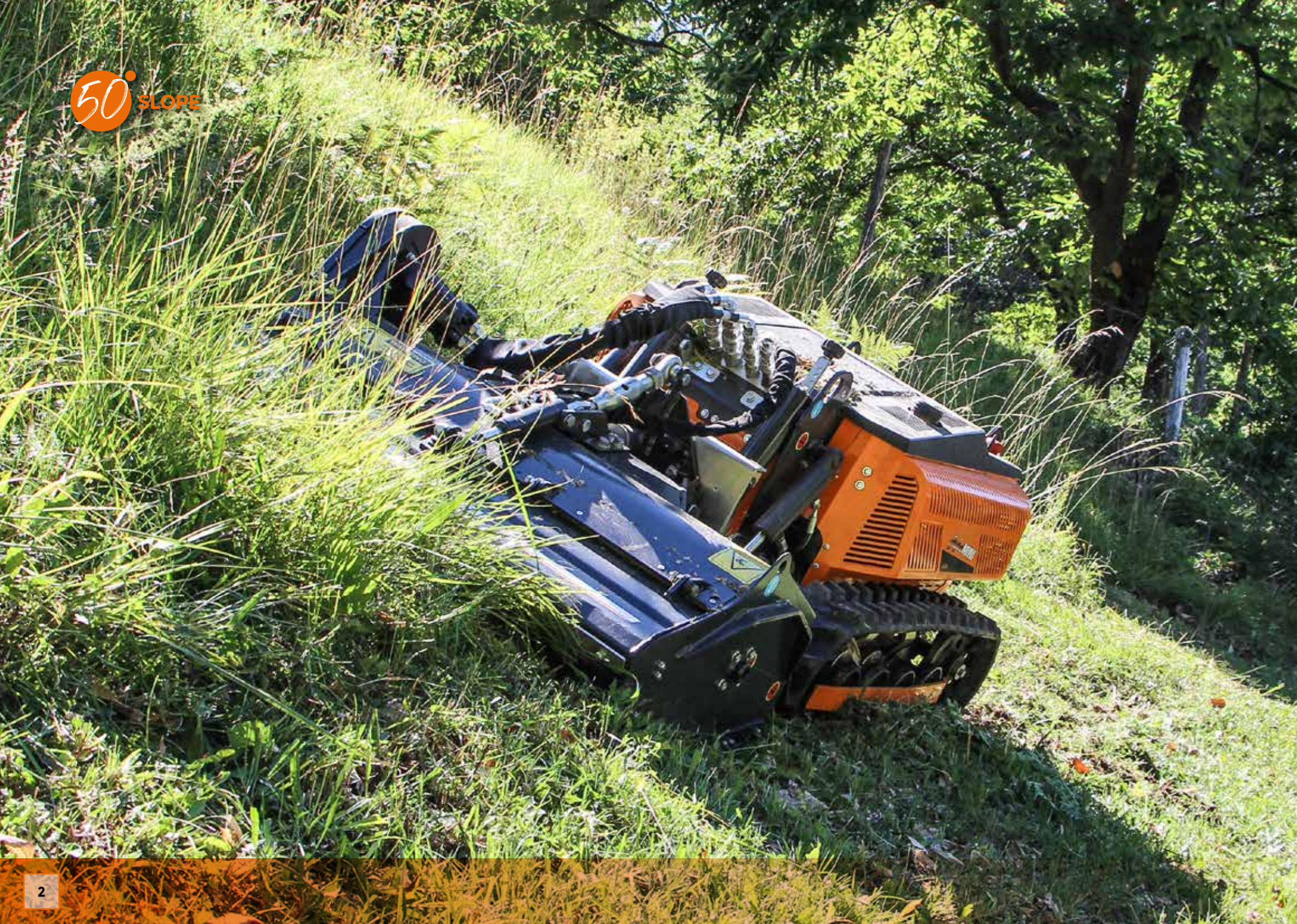
50° SLOPE



REMOTE CONTROLLED  
TOOLS CARRIER

*New*





## Compact Remote Controlled Tools Carrier

**RoboMINI** is a compact remote controlled tools carrier designed to work safely on slopes up to 50° in any directions or in very narrow areas.

The particular design concept, the low center of gravity and the oscillating movement of the tracks, makes **RoboMINI** perfect for operating in rough areas, maintaining an excellent grip as it always remains in contact with the surface.

Equipped with a **23 HP gasoline engine**, it can be fitted with various attachments that can be quickly replaced using a dedicated system.

**RoboMINI**  
23HP



WORKING RANGE 492 FT



# STRENGTHS

**RoboMINI**  
23HP

## STRENGTHS



### Safety and Comfort

- Compact radio controlled machine
- Operator in safety zone
- Excellent handling
- Easy to use and carry



### Working on steep slopes

- Excellent grip in all directions up to 50°
- Oscillating movement of the tracks
- Special oil sump
- Low center of gravity



### Multifunction

- Multiple tools available
- Road and river maintenance
- Green maintenance and forestry work
- Agriculture and industry service



### Productivity

- 23 HP gasoline engine
- Quick change of equipment
- Fast execution of work
- Reduced consumption



**OSCILLATING  
TRACKS**  
PAC. 12/13





OPERATOR  
IN SAFETY  
ZONE

# REMOTE CONTROLLED

**RoboMINI**  
23HP

## RoboMINI is Safety

REMOTE CONTROL  
IS LIGHT, INTUITIVE,  
AND EASY TO MASTER

**RoboMINI** is a remote controlled machine able to work in **complete safety** in **dangerous and in very narrow areas**, with slopes up to 50° in any directions.

The **excellent stability** of the machine is due to the **low centre of gravity** and to the **oscillating system of the rubber tracks** for an excellent grip.

The **safety of the operator** is one of our targets: the use of the remote control with up to **492 ft** range avoids several work risks to the operator such as noise, vibrations, exposure to exhaust materials, etc.

EMERGENCY  
BUTTON



492 FT



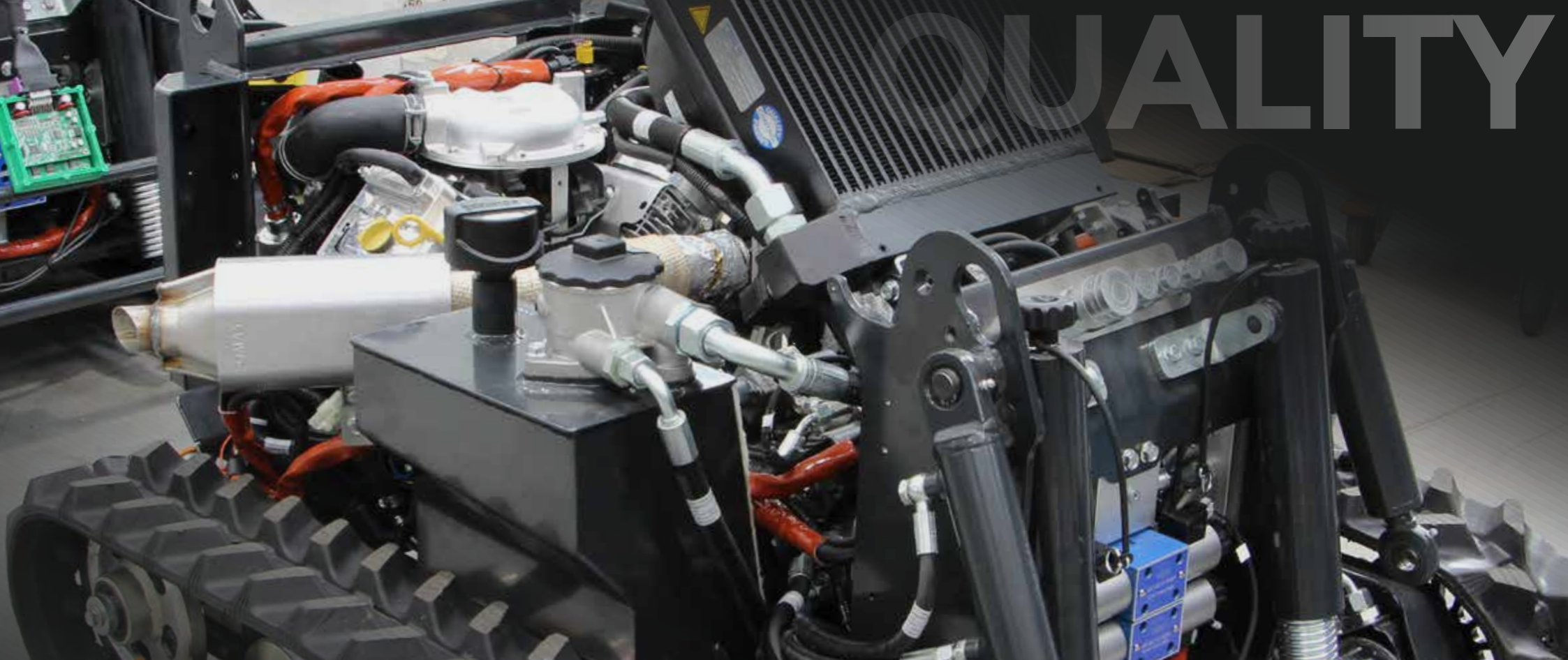
## RoboMINI 23HP

### COMPONENT QUALITY

RoboMINI is built with an ultra-resistant steel to ensure a long duration; all the components are certified to ensure the maximum reliability and safety.

- › Powerful and efficient gasoline engine, appropriate for steep slopes.
- › Engine crankcase designed to ensure the lubrication, even on steep slopes.
- › Lifting system for a quick tool replacement.
- › Self-cleaning reversible fan to increase productivity and savings.
- › Low centre of gravity and oscillating movements of the tracks for a better stability.
- › Remote-control technology developed by a team of specialized experts.
- › Steel roll bar for total protection of the machine (optional).
- › Independent cooling system of the hydraulic system to optimize the performances.
- › Flat bottom frame to protect the parts of the engine.

These fundamental characteristics distinguish this machine from any other robot used for grass cutting: **power, reliability, strength and high efficiency.**



GASOLINE ENGINE 23 HP

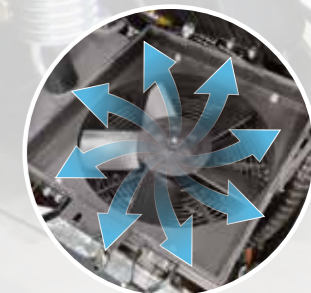


THE BEST COMPONENTS



HYDRAULIC SELF-CLEANING FAN

RoboMINI is equipped with an **hydraulic self-cleaning fan** to increase productivity and savings.

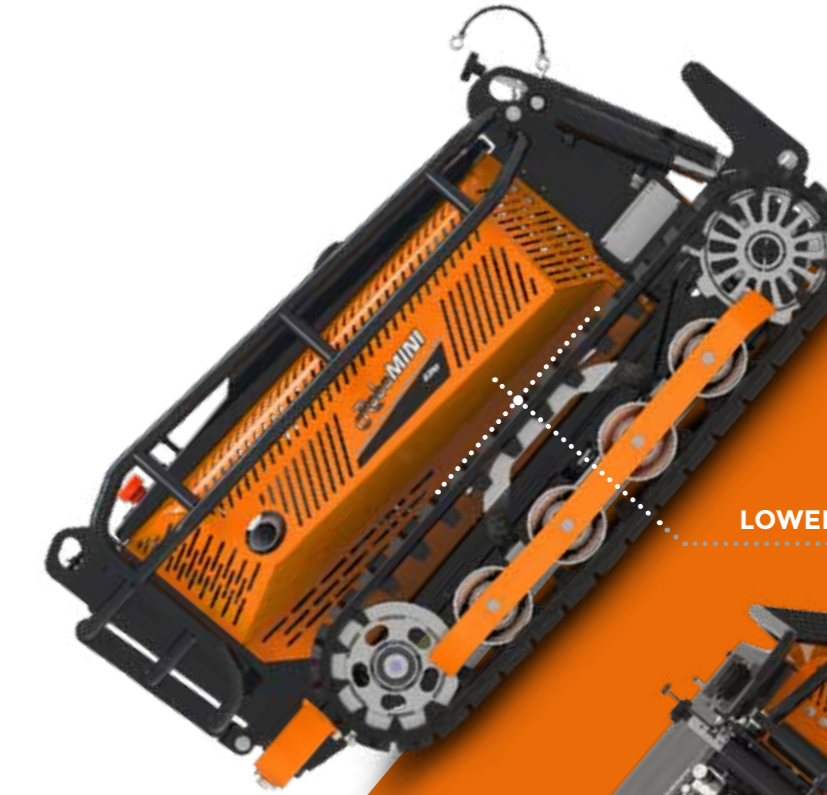






## Working on steep slopes up to 50°

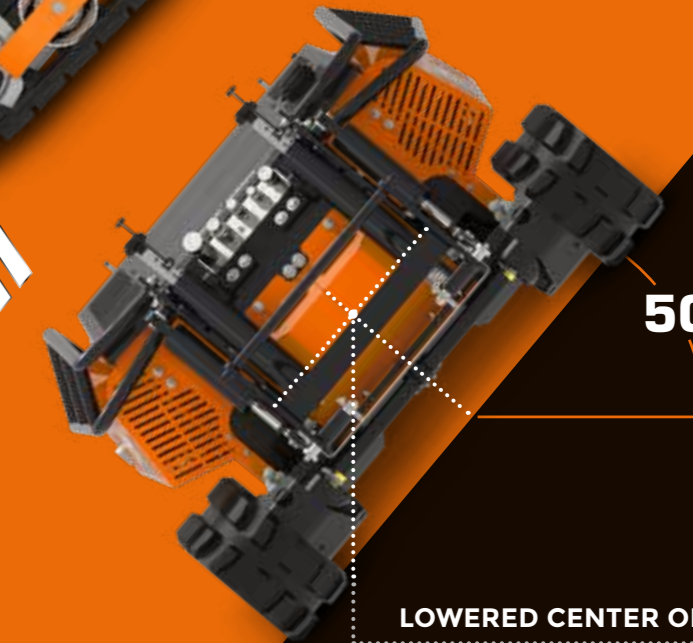
The special design of the tracks and its tensioning system makes RoboMINI a safe machine for working on slopes up to 50° in any directions: hilly and mountainous areas, slopes, embankments, and in all those places where the adherence is very low and where a machine for high slopes is required.



LOWERED CENTER OF GRAVITY



RoboMINI



50°

LOWERED CENTER OF GRAVITY



# OSCILLATING TRACKS

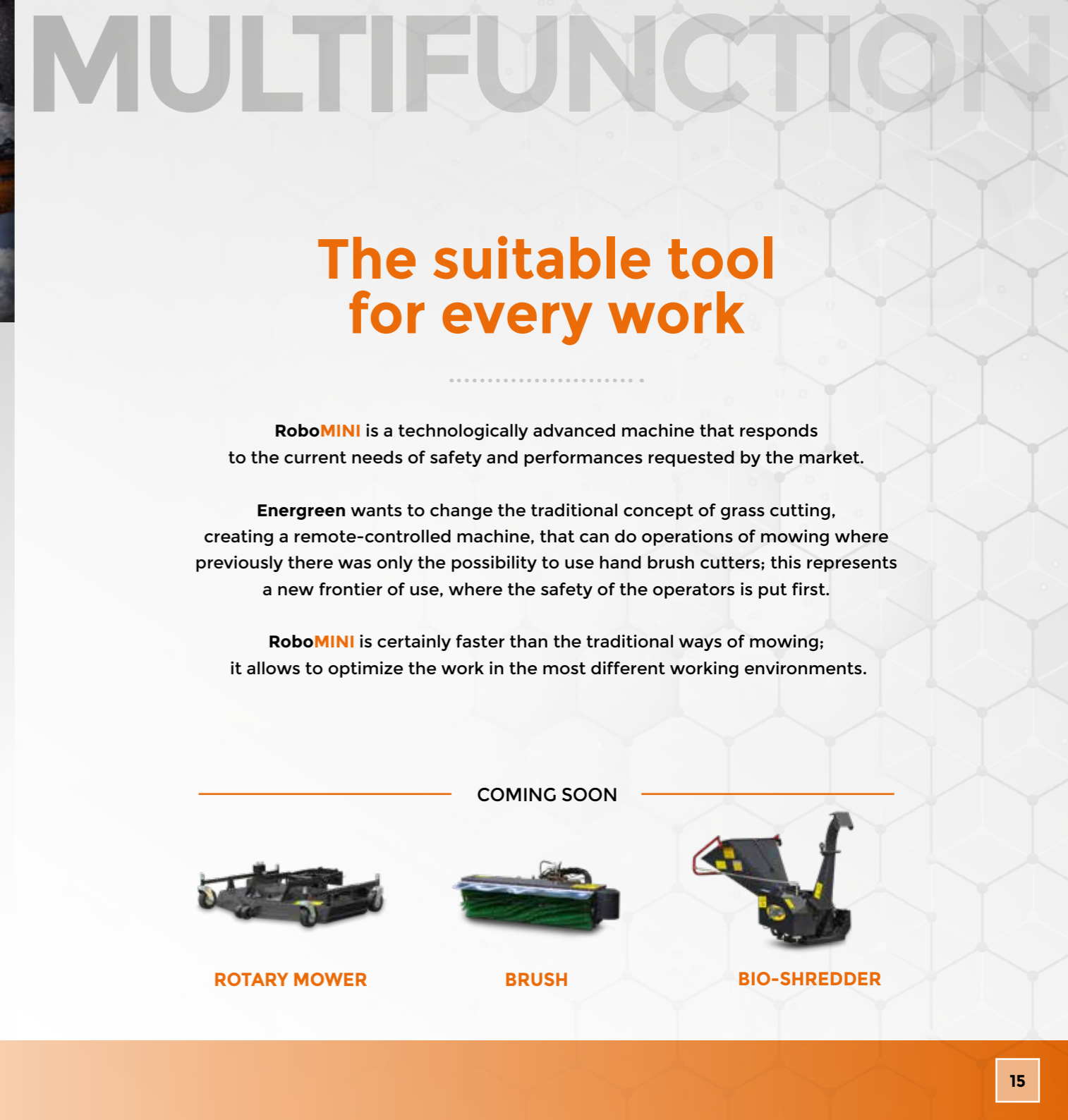
- ✓ GREATER STABILITY
- ✓ EXTREME GRIP

## Great Stability

Thanks to the particular design concept, the low center of gravity and the oscillating movement of the tracks, **RoboMINI** is perfect for operating in rough areas or on steep slopes, always maintaining an excellent grip, as the machine always remains in contact with the surface even in difficult conditions.







# MULTIFUNCTION

## The suitable tool for every work

**RoboMINI** is a technologically advanced machine that responds to the current needs of safety and performances requested by the market.

**Energreen** wants to change the traditional concept of grass cutting, creating a remote-controlled machine, that can do operations of mowing where previously there was only the possibility to use hand brush cutters; this represents a new frontier of use, where the safety of the operators is put first.

**RoboMINI** is certainly faster than the traditional ways of mowing; it allows to optimize the work in the most different working environments.



### HEAD 100

Strong and reliable cutting head, built in Strenx®, ideal for cutting grass and shrubs, up to a diameter of 1,18 in. It can be equipped with a Y-shaped knives rotor or with a hammer rotor with adjustable height of cutting.

#### TECHNICAL DATA

Cutting width	39 in
No. of tools	18 (Y) / 16 (Hammer)
Oil flow	8 gal/min
Hydraulic motor	10.3 cc
Pressure	180 bar
Weight	300 lbs



### STUMP GRINDER

Professional tool designed to till stumps or trunks with an arc movement, until they are chopped and then buried in order to quickly clean up the area.

#### TECHNICAL DATA

Cutter wheel	14 in
Rotation wheel	2000 rpm
No of teeth	12
Oil flow	8 gal/min
Pressure	180 bar
Weight	220 lbs



### CUTTER BAR

Light and handy bar with 40 teeth in tungsten carbide, wear-resistant, suitable for cutting the grass at the base or the fodder, for allowing the drying and the following storage.

#### TECHNICAL DATA

Cutting width	71 in
Rotation speed	950 rpm
Oscillation	13° r-l
Hydraulic motor	38 cc
Pressure	180 bar
Weight	209 lbs



### SNOW BLOWER

Blower designed to remove the snow, both soft and frozen, from roads, sidewalks, squares, car parks, ramps, and narrow or hardly accessible places. It is equipped with an adjustable deflector of ejection.

#### TECHNICAL DATA

Working width	43 in
Height	58 in
Cutter diameter	16 in
Hydraulic motor	26 cc -180 bar
Chute rotation	200° (+/- 100°)
Weight	309 lbs

#### COMING SOON



ROTARY MOWER



BRUSH



BIO-SHREDDER





## Fast tool change

**RoboMINI** is a radio-controlled tool carrier machine equipped with a dedicated lifting system that provides a **quick tool replacement**, that facilitates the operator and makes his work multifunctional.



## Easy maintenance

**RoboMINI** is equipped with a lifting hood in the upper part and side protections easy to open. These characteristics give the operator the control on the essential components of the machine, making ordinary maintenance such as air filter cleaning and oil filter change much easier.



## Protection roll-bar

For a complete protection of the machine, **RoboMINI** can be equipped with a steel roll-bar (optional), a solid structure composed of steel tubes and designed to limit damages in case of a collision. The handy and strong roll-bar makes everyday maintenance much easier, having also the possibility of lifting it.



## Compact machine

**RoboMINI** is a quick and compact machine that simplify the work also during the transfer on the road; indeed, it can be transported in a small trailer or inside a van. It is a machine easy to transport thanks to its reduced dimensions (52x40x27 in).





# TECHNICAL DATA



## RoboMINI

Max slope in all directions	50°
Speed	0 - 7 km/h / 0 - 4.3 mph
Transmission to tracks	Hydraulic
Transmission to equipment	Hydraulic
Machine weight without equipment	926 lbs

## ENGINE

Brand	Briggs&Stratton
Type	V-Twin Gasoline
Power	23 HP (17 kW)
Fuel tank capacity	4 gal
Working RPM	3600 rpm

## REMOTE CONTROL

Brand	Autec
Radio frequency	915 Mhz
Working range	492 ft
Joystick	Proportional
Battery	Rechargeable

**REMOTE CONTROL CASE**  
standard



Technical and construction specifications may be subject to change without prior notice.





*Robo***MINI**

**ENERGREENAMERICA.COM**



# REMOTE CONTROLLED TOOLS CARRIER



**ENERGREEN**<sup>®</sup> *America*  
Professional Machines

ENERGREEN America · 1242 Nowell Dr · Augusta · GA 30901 · USA  
Phone CA 510 593 3144 · Phone GA 706 945 2800  
info@energreamerica.com · www.energreamerica.com

PROFESSIONAL MACHINES AND EQUIPMENT



ELSDP1600100 - 05/21 - © Energreen America 2021 - All rights reserved  
Photo, technical and constructive characteristics subjected to modification without reporting requirement.